




Forestry & Logging Tools



- Cant Hooks
- Pike Poles
- Peavies
- Log Jacks
- Timber Carriers
- Skidding Tongs
- Lifting Tongs
- Hookaroons
- Firefighting Tools
- Rigging Hardware



Table of Contents

 **In February of 1910** William, Emil and Fred Stocker came to Chattanooga, Tennessee from Saginaw, Michigan to escape the cold North winters.

Blacksmiths by trade, the brothers were drawn to the South by its growing timber industry and the abundance of strong Hickory wood for tool handles.

That year the brothers incorporated **Dixie Logging Tool Company** at the corner of 13th Street & Greenwood Ave. - the forging plant still operates on that site to this day.

Through booms, depression, recessions and two World Wars, Dixie Industries has provided the forestry and logging industry with quality tools for 100 years.


Why Dixie chooses only Hickory

Hickory is the hardest and strongest wood found in North America. Well known for its strength and shock resistant properties, hickory is extremely tough, resilient, even textured, very hard and rated only moderately heavy - providing excellent strength-to-weight ratios.

Hickory's abundance for commercial availability is 2.2% of total U.S. hardwoods. Handles made of Hickory will outlast and out-perform other hardwoods for years of reliable service.

Maple, also a hardwood, has good strength properties, but dries slowly with high shrinkage and can be susceptible to movement in performance. Maple's abundance for commercial availability is 4% of total U.S. hardwoods - making it a cheaper alternative to Hickory.

Scientific tests for toughness performed by the USDA Forest Service show that **Hickory is 47% stronger than Maple.***

Dixie Industries always has, and always will use White Hickory for our wood handles in Cant Hooks, Peavies, Log Jacks, Timber Carriers and Hookaroons. 

* Forest Products Laboratory. 1999. U.S. Dept. of Agriculture, Forest Service pp.4-24.

Table of Contents

Handled Tools

Cant Hooks	2
Peavies	3
Hookaroons	4
Pike Poles	5
Log Jack	6
Timber Carrier	6
McLeod Tool	6
Mill Rakes & Brooms	6

Tongs

Skidding	7
Logger Style	7
Timber Lifting	8
Specialty	8

Chain Assemblies 9

Tractor Rigging 10

Woodworking 11

Fall Protection 12

Miscellaneous 13

Terms and Conditions 14



Cant Hook

Dixie Industries manufactures Cant Hooks from the highest quality materials available.

Wooden handles are top quality straight grain white mountain hickory hardwood, kiln dried to 18% moisture content, then precision cut to an exact fit.

Duckbill Hooks are drop forged with the bills ground to a fine point. Clasps and extension toe rings are ductile iron castings for long lasting service.

Replacement parts including handles, duckbill hooks, extension toe rings and clasps are available.

Clasp



22199

Extension
Toe Ring



21199

Forged
Duckbill Hook



24010



Handled Tools

Item #	For Log Sizes (in.)	Total Wt.	Replacement Handle #	Handle Dia.	Handle Length	Handle Wt.	Duckbill Hook #	Duckbill Hook Lgth
<i>hickory handle</i>								
06100	6 to 16"	4.6 lbs	06102	2¼"	2'	2.0 lbs	24010	7/16 x 7/8 x 8
06110	6" to 16"	6.0 lbs	06112	2¼"	2½'	3.0 lbs	24010	7/16 x 7/8 x 8
06120	6" to 16"	6.4 lbs	06122	2¼"	3'	3.5 lbs	24010	7/16 x 7/8 x 8
06130	6" to 16"	7.0 lbs	06132	2¼"	3½'	3.8 lbs	24010	7/16 x 7/8 x 8
06140	6" to 16"	8.3 lbs	06142	2¼"	4'	4.0 lbs	24010	7/16 x 7/8 x 8
06240	6" to 16"	10.1 lbs	06242	2½"	4'	5.0 lbs	24010	7/16 x 7/8 x 8
06250	8" to 24"	11.7 lbs	06252	2½"	4½'	5.5 lbs	24230	½ x 1 x 9
06260	8" to 24"	13.5 lbs	06262	2½"	5'	6.0 lbs	24230	½ x 1 x 9
06380	8" to 24"	10.8 lbs	06382	2½"	6'	7.3 lbs.	24230	½ x 1 x 9

Dixie Industries Cant Hooks can be built to customer specifications upon request. Please contact a Customer Service representative for more information.

Peavies

Dixie Industries manufactures two styles of Peavies for the professional logger: the Tubular Steel Socket Style and the Rafting/Bangor Style.

Handles are top quality straight grain White Mountain Hickory hardwood, kiln dried to 18% moisture content, then precision cut to an exact fit.

Duckbill Hooks are drop forged with the bills ground to a fine point.

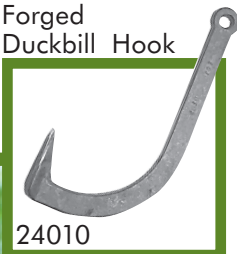
The Dixie Bangor style peavy - our lightest tool - features a drop forged pick, precision welded into a drawn carbon steel socket. This one piece unit makes field repairs easier.



Steel Socket Style



Rafting/Bangor Style



Item #	For Log Sizes (in.)	Total Wt.	Replacement Handle #	Handle Dia.	Handle Length	Handle Wt.	Duckbill Hook #	Duckbill Hook Lgth
Solid Steel Socket Style Peavy								
00120	6" to 16"	7.0 lbs	00122	2 1/4"	3'	3.5 lbs	24010	7/16 x 7/8 x 8
00130	6" to 16"	7.5 lbs	00132	2 1/4"	3 1/2'	3.8 lbs	24010	7/16 x 7/8 x 8
00140	6" to 16"	9.3 lbs	00142	2 1/4"	4'	4.0 lbs	24010	7/16 x 7/8 x 8
00235	6" to 16"	10.0 lbs	00237	2 1/2"	3 1/2'	3.8 lbs	24010	7/16 x 7/8 x 8
00240	6" to 16"	10.5 lbs	00242	2 1/4"	4'	5.0 lbs	24010	7/16 x 7/8 x 8
00250	8" to 24"	11.3 lbs	00252	2 1/2"	4 1/2'	5.5 lbs	24230	1/2 x 1 x 9
00260	8" to 24"	12.4 lbs	00262	2 1/2"	5'	6.0 lbs	24230	1/2 x 1 x 9
Rafting/Bangor Style Peavy								
03240	6" to 16"	8.5 lbs	03242	2 1/4"	4'	4.0 lbs	24010	7/16 x 7/8 x 8
03250	8" to 24"	10.3 lbs	03252	2 1/2"	4 1/2'	5.5 lbs	24230	1/2 x 1 x 9
03260	8" to 24"	12.0 lbs	03262	2 1/2"	5'	6.0 lbs	24230	1/2 x 1 x 9

Dixie Industries Peavies can be built to customer specifications upon request. Please contact a Customer Service representative for more information.

Hookaroons

Ergonomically designed for specific tasks within a high production mill environment, our hookaroons excel when extreme light weight & durability are required.



Safety Orange

Fiberglass Safety Yellow

Standard heads are drop forged steel with ground points. Oregon heads are fabricated steel for light weight and durability - the Alomalite, with its aluminum alloy head and steel point provide optimum durability for less weight. Solid Hickory handles are shaped to provide maximum usability.

	Item #	Description	Approx. wt. ea.	Item # Handle Only
1.5 Dixie Standard	12292	Head Only	2.0 lbs	--
	12220	36" Standard Hickory Handle	3.6 lbs	12221
	12230	36" Standard Safety Handle Orange	3.6 lbs	12331
	12240	36" Fiberglass Safety Yellow	4.2 lbs	--
1.5 Dixie Curved	12392	Head Only	1.8 lbs	--
	12320	36" Standard Hickory Handle	3.6 lbs	12221
	12330	36" Standard Safety Handle Orange	3.6 lbs	12331
	12340	36" Fiberglass Safety Yellow	5.0 lbs	--
Western Star	12945	Head Only	1.5 lbs	--
	12900	18" Standard Hickory Knob End Handle	2.9 lbs	12221
	12920	36" Standard Hickory Handle	3.4 lbs	12331
	12950	36" Fiberglass Safety Yellow	4.2 lbs	--
1.0 Dixie Standard Hume	12845	Head Only	1.1 lbs	--
	12801	18" Standard Hickory Knob End Handle	2.2 lbs	12291
	12820	36" Standard Hickory Handle	2.7 lbs	12221
	12831	36" Standard Safety Handle Orange	2.7 lbs.	12331
	12850	36" Fiberglass Safety Yellow	3.4 lbs	--
	12890	48" Standard Hickory Handle	3.2 lbs.	--
1.0 Dixie Curved	12848	Head Only	1.0 lbs	--
	12803	36" Standard Hickory Handle	2.2 lbs	12291
	12830	36" Standard Safety Handle Orange	2.8 lbs	12221
	12853	36" Fiberglass Safety Yellow	2.9 lbs	--
Brooks Star Bright	12846	Head Only	0.7 lbs	--
	12620	36" Standard Hickory Handle	2.5 lbs	12221
	12670	48" Fiberglass Safety Yellow	2.5 lbs	--
Alomalite	12792	Head Only	2.0 lbs	--
	12291	18" Standard Hickory Knob End Handle	.8 lbs	--
	12710	18" Fiberglass Safety Yellow	2.8 lbs	12291
Oregon Fabricated w/ forged tip	12720	36" Standard Hickory Handle	3.6 lbs	12221
	12952	Head Only	2.0 lbs	--
	12925	36" Standard Hickory Handle	3.6 lbs	--
Replacement Handles	12935	36" Fiberglass Safety Yellow	3.6 lbs	--
	12291	18" Standard Hickory Knob End Handle	.8 lbs	--
	12221	36" Standard Hickory Handle	1.8 lbs	--
	12331	36" Standard Safety Handle Orange	1.7 lbs.	--
	12622	36" Fiberglass Safety Yellow	3.3 lbs.	--

Warning: Striking tools may dislodge pieces, which can cause injury. Eye and other personal protection should be used by anyone in the vicinity of a striking tool. Heating or grinding will aggravate the hazardous condition and affect the temper of striking tool. Wear safety goggles and never strike tool against metal or another tool.

Pike Poles

Dixie Pike Poles are manufactured to withstand extensive use of handling timber in and around water. All pike hooks are manufactured from a single piece of high carbon steel and drop forged.



Aluminum Handle

Anodized aluminum lasts considerably longer than non-anodized aluminum when used in corrosive or wet environments. Dixie Aluminum Pike Poles are considerably lighter than the same lengths made with ash and will not warp or break with continued use. Dixie's exclusive CORE LOK rubber seal assures a watertight barrier. Aluminum handled Pike Poles come with plastic knobs.*

Item #	Description	Handle Diameter	Length	Approx. wt. ea.	Package Quantity
10082	Aluminum Pike Pole	1.5"	6'	3.3 lbs.	3
10002	Aluminum Pike Pole	1.5"	8'	4.0 lbs.	3
10012	Aluminum Pike Pole	1.5"	10'	4.8 lbs.	3
10022	Aluminum Pike Pole	1.5"	12'	5.6 lbs.	3
10032	Aluminum Pike Pole	1.5"	14'	6.3 lbs.	3
10042	Aluminum Pike Pole	1.5"	16'	7.0 lbs.	3
10052	Aluminum Pike Pole	1.5"	18'	7.8 lbs.	3
10062	Aluminum Pike Pole	1.5"	20'	8.6 lbs.	3
10072	Aluminum Pike Pole	1.5"	24'	9.9 lbs.	3

* Wooden knobs available for all pike poles, simply add "WD" to item# when ordering.



Ash Handle

All Ash handles are second growth American Ash - with straight grain throughout the entire handle length. Ash is used in Pike Poles because it is lighter in weight than other woods and offers extremely long grains increasing resiliency to tearing before breaking.

Item #	Description	Handle Diameter	Length	Approx. wt. ea.	Package Quantity
10080	Pike Pole	1.5"	6'	4.2 lbs.	3
10680	Replacement Handle	1.5"	6'	3.1 lbs.	3
10000	Pike Pole	1.5"	8'	5.3 lbs.	3
10600	Replacement Handle	1.5"	8'	4.2 lbs.	3
10010	Pike Pole	1.5"	10'	6.3 lbs.	3
10610	Replacement Handle	1.5"	10'	5.3 lbs.	3
10020	Pike Pole	1.5"	12'	7.3 lbs.	3
10620	Replacement Handle	1.5"	12'	6.3 lbs.	3
10030	Pike Pole	1.5"	14'	8.3 lbs.	3
10630	Replacement Handle	1.5"	14'	7.3 lbs.	3
10040	Pike Pole	1.5"	16'	9.4 lbs.	3
10640	Replacement Handle	1.5"	16'	8.3 lbs.	3

Midget Pike Poles

Item #	Description	Approx. Length	Package wt. ea.	Quantity
13920	Midget Pike Pole - Ash	3'	2.7 lbs.	3
13921	Ash Replacement Handle	3'	1.5 lbs.	3
13925	Midget Pike Pole - Aluminum	3'	2.7 lbs.	3



Log Jack

A professional quality multi-use tool for the serious wood cutter. Easily converts into a cant hook by removing the lifting brace.



Duckbill hook is made of drop forged steel. Extension toe rings are ductile iron castings for long lasting service. Handle is made from top quality straight grain White Mountain Hickory, kiln dried to 18% moisture content. Ideal for log sizes 3 to 12" .
*other size hooks available on request.

Item #	Description	Handle Diameter	Length	Approx. wt. ea.	Package Quantity
06238	Dual Purpose Log Jack	2.25"	3.5'	10.1 lbs.	1
06239	Replacement Handle	--	--	3.9 lbs.	1

WARNING! Always wear appropriate eye and body protection while using this tool.

Timber Carrier

Heavy steel swivel allows for free movement permitting timber passage through narrow areas.

Ductile iron clasp provides higher strength. Clasp is open at top and drawn tight by a bolt, eliminating the need for a bolt hole through handle - increasing strength.



Item #	Description	Handle Diameter	Length	Approx. wt. ea.	Package Quantity
09041	Timber Carrier	2.5"	4'	12.1 lbs.	1
09341	Replacement Handle	--	--	4.5 lbs.	1
09051	Timber Carrier	2.5"	4.5'	12.9 lbs.	1
09351	Replacement Handle	--	--	4.8 lbs.	1

WARNING! Flexing load in a perpendicular direction of grain could cause handle fracture and result in personal injury

McLeod Tool

A combination hoe, tamper & heavy duty rake used by fire fighters. Designed for use in clearing fire lines.

Hoe edge is cut and tapered in a 45° angle. Handle is removable for storage and replacement.

Item #	Description	Handle Diameter	Length	Approx. wt. ea.	Package Quantity
44915	McLeod Tool	1.5"	51"	5.7 lbs.	10
44908	Replacement Handle	1.5"	48"	1.5 lbs.	10
44927	Replacement Head	--	--	2.3 lbs.	10



Mill Rakes & Brooms

Extra long handles to safely reach under equipment in paper mills, lumber mills & wood processing plants.

Item #	Description	Rake/Broom Head Size	Length	Approx. wt. ea.	Package Quantity
080710	Laser Cut Mill Rake	16"	14'	8.5 lbs.	1
080711	Medium Duty Mill Broom	23"	14'	7.4 lbs.	1
080712	Heavy Duty Mill Broom	23"	14'	7.4 lbs.	1



* replacement broom heads available

Skidding

Specially shaped to grab and hold poles and logs for skidding and dragging operations.

Upset forged from round steel to position additional steel at critical stress areas. Points are fine ground to assure long lasting sharpness.

Tong sizes 3/4 and 1 inch are supported by a special Tong Shut. Tong sizes 1 1/4 and 1 1/2 inches use screw pin anchor shackles.

Two configurations are available.



Item #	Material Diameter	Opening Minimum	Opening Maximum	Approx. Weight	Pack
Ring Only		Ring Size			
40005	3/4"	1/2" x 2 1/2"	3 9/16"	16"	7.0 lbs. 3
42315	1"	5/8" x 2 3/4"	4"	20"	12.8 lbs. 3
40225	1"	5/8" x 2 3/4"	4 1/2"	25"	14.3 lbs. 3
40455	1 1/4"	7/8" x 3 1/4"	7"	32"	28.8 lbs. 1
40555	1 1/2"	1" x 4"	8"	36"	48.0 lbs. 1
Swivel Grab		Hook Size			
40004	3/4"	3/8"	3 9/16"	16"	7.9 lbs. 3
42314	1"	3/8"	4"	20"	13.3 lbs. 3
40224	1"	3/8"	4 1/2"	25"	15.3 lbs. 3
40454	1 1/4"	1/2"	7"	32"	29.7 lbs. 1

Warning: Skidding tongs are designed for pulling or dragging. They are not load rated and should not be used for overhead lifting. Do not heat tong points to sharpen them.



Logger Style

Designed for tree length logging. Logger style tong's unique design places additional material at stress points.

Made from alloy steel for maximum strength and durability. Points are shaped to make hooking and unhooking easy while assuring holding strength. Tong is supported with heat treated ring attached by shackles.

Item #	Material Diameter	Ring Size	Opening Minimum	Opening Maximum	Approx. Weight	Pack
42815	1"	3/4" x 3"	5"	13"	15.5 lbs. 1	
42805	1 1/4"	7/8" x 3 1/4"	7"	16"	24.5 lbs. 1	
42825	1 1/2"	1" x 4"	7 1/2"	22"	33.8 lbs. 1	

Warning: Not for overhead lifting.



* See page 13 for tong replacement parts.

NOTE: Dixie Industries' tongs meet the rating and testing requirements of ASME B30.20 (Below the Hook Lifting Devices) for Group 1 products - Structural and Mechanical Lifting Devices.

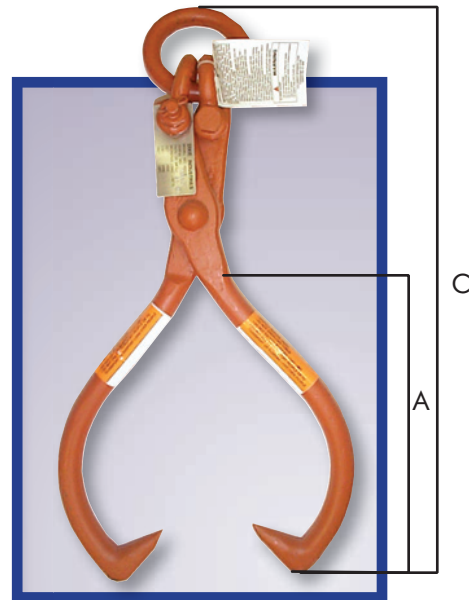
Timber Lifting

Tong shape has been designed to provide a sure grip on poles and logs. *Painted bright orange for job site identification.*

Dixie Industries upset forges round alloy steel for optimum tensile strength and durability.

All Dixie lifting tongs are proof loaded to 2 times the working load limit then affixed with a permanent metal identification tag. Written certification is also supplied at time of shipment.

Lifting tongs are supported by either a screw pin shackle or nut & bolt safety shackle with a ring.



Tongs

Item #	Material Dia. & Max. Opening	Close Ht. "A"	Overall Ht. "C"	Shackle Size	Ring. Size	WLL at Degree of Opening						Approx. Weight
						75°		135°		180°		
						Jaw Open.	WLL (lbs)	Jaw Open.	WLL	Jaw Open.	WLL	
40008	3/4" x 16"	7"	18 3/4"	3/8" N/B*	5/8" x 2 3/4"	3 3/4"	1,500	12"	1,000	16"	750	7.0 lbs.
40218	1" x 20"	9"	23 1/4"	1/2" N/B	3/4" x 3"	4"	2,500	17"	2,000	20"	1,500	16.5 lbs.
40228	1" x 25"	10"	25 1/4"	1/2" N/B	3/4" x 3"	4 1/2"	2,500	20"	2,000	25"	1,500	17.0 lbs.
40458	1 1/4" x 32"	14"	31"	5/8" N/B	7/8" x 3 1/4"	7"	3,000	27"	2,500	32"	2,000	36.0 lbs.
40558	1 1/2" x 36"	16"	37 3/4"	3/4" N/B	1" x 4"	7 1/2"	5,000	32"	4,000	36"	3,000	50.5 lbs.

Warning: Know your Working Load Limit - do not exceed it! The WLL decreases as you increase the size of the jaw opening. Do not heat tongs to sharpen points! Do not exceed maximum rated capacity.

*NB= nut and bolt

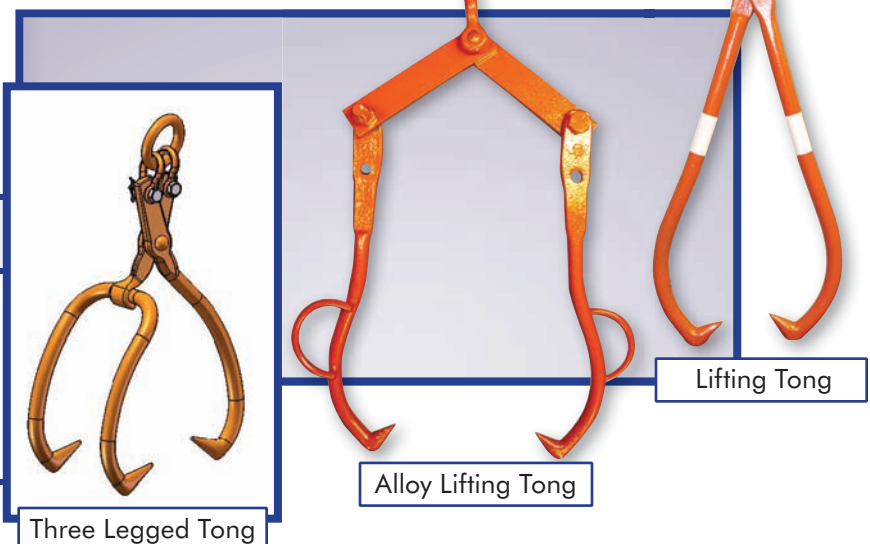
Specialty Tongs

Special situations require special equipment to safely and effectively get the job done.

Oversized logs, uneven terrain and any number of other unusual circumstances can face loggers from day to day. Dixie's specialty tongs keep the work flow going without having to miss a beat. All tongs are powder coated orange.

Item #	Description	Open Max.	Open Min.	Wt. lbs.	WLL lbs.
D080451	1 1/2" x 48" Alloy Lifting Tong	48"	7 1/2"	13.1	3,000
D080385	1 1/2" x 65" Lifting Tong	65"	-----	28.6	3,500
D080487	3 Legged Tong	36"	7 1/2"	61.0	3,000

Note: Maximum and minimum dimensions are approximate and can vary.



Choker Chain Assembly

Safety and Reliability First - secure the load with the industry's best assembly made with the highest quality components.

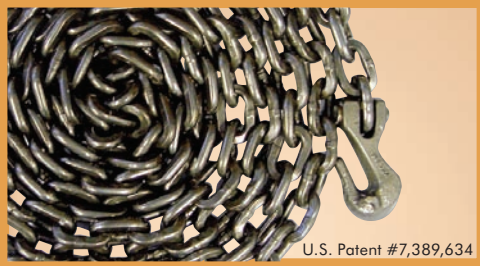


Item #	Description	Approx. wt. ea.	WLL
95617	3/8" x 12' G70 Chain with 3/8" Choker Hook	11.8 lbs	6,600 lbs

Warning: Never exceed working load limits.

EZPro Chain Assemblies

Lighter and stronger than conventional chain assemblies - the best strength to weight ratio in the Heavy Duty industry. Dixie's next Trucking Industry Revolution.



6K and 10K chain links are 100% proof tested and meet or exceed all Federal and D.O.T. requirements for cargo securement components.

Designed and manufactured specifically for cargo securement applications - higher Working Load Limits mean less chains needed to meet D.O.T. regulations.

Assemblies are spin riveted with a clear gloss powder-coating. Each link is embossed alternating between 6K WLL or 10K WLL, CMUSA and trace code.

Item #	Description	Size	WLL	Wt. Ea.	Origin
609563CRV	6K Chain, I Beam, Hooks each end	6K x 20 ft.	6,000 lbs.	21.2 lbs.	USA
609564CRV	6K Chain, I Beam, Hooks each end	6K x 25 ft.	6,000 lbs.	26.2 lbs.	USA
609573CRV	10K Chain, I Beam, Hooks and end	10K x 20 ft.	10,000 lbs.	36.7 lbs.	USA
609574CRV	10K Chain, I Beam, Hooks each end	10K x 25 ft.	10,000 lbs.	44.9 lbs.	USA
D080199	6K to 3/8 G7 Chain Adaptor	----	----	----	USA

HD Latch Hooks & Assemblies

Spring-loaded grab hook latch - makes positive contact with hook neck and rotates out of the way for loading. Lock and chain not included.

Item #	Grade	Size	Description	WLL	Wt. Ea.
62275	G70	5/16"	Clevis Grab Hook w/ latch	4,700	.75
62375	G70	3/8"	Clevis Grab Hook w/ latch	6,600	1.10
62276	G80	5/16"	Clevis Grab Hook w/ latch	4,500	.75
62376	G80	3/8"	Clevis Grab Hook w/ latch	7,100	1.18
7038B	G70	3/8"	Heavy Duty Latch Kit	----	----
8038B	G80	3/8"	Heavy Duty Latch Kit	----	----
78516B	G70/G80	5/16"	Heavy Duty Latch Kit	----	----
95473G7	G70	5/16"x 20'	Chain Assembly w/ Latch Hook	4,700	20.87
95573G7	G70	3/8"x 20'	Chain Assembly w/ Latch Hook	6,600	30.36
95576G8	G80	3/8"x 20'	Chain Assembly w/ Latch Hook	7,100	30.36



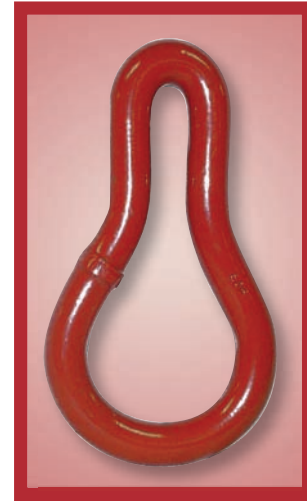
Saddle Grab Link

Attachments that work as hard as you do. Extra material at critical load bearing area in saddle of link.

Heat treated drop forged alloy steel link. Designed to work in conjunction with 3/8" chain and 3/8" Hammerlok® link. 4:1 design factor.

Item #	Material Diameter	Inside Length	Crown Width	Throat Width	WLL	Approx. wt. ea.	Pack
44200	3/4"	5 1/2"	2 1/4"	9/16"	6,600 lbs	2.1 lbs.	10

Warning: Never exceed the Working Load Limit.



Choker Hook

Attachments that work as hard as you do. Designed to provide superior load handling capabilities.

Heat treated drop forged alloy steel hook. Designed to work in conjunction with 3/8" chain. Choker hook is supplied with a 1/2" x 2 hex head grade 8 bolt. Specially designed retainer curtails chain from exiting throat section. Hook is supplied with a large bowl to allow chain to move freely. 4:1 design factor.



Item #	Chain Size	Throat Opening	Inside Bowl Dia.	Pin Diameter	WLL	Approx. wt. ea.	Pack
44300 Large	3/8"	1/2"	1 1/2"	1/2"	6,600 lbs	2.0 lbs.	10
44330 Micro	3/8"	1/2"	1 1/2"	1/2"	6,600 lbs	1.5 lbs.	10

Warning: Never exceed the Working Load Limit.

Hammerlok Coupling Link

Specially designed for quick and easy securing of attachments such as saddle grab links.

Drop forged alloy steel and heat treated to handle specific loads. Each unit contains an alloy load pin and stud which are easily assembled with a hammer. Scientifically engineered to place load stress on the coupling link body, the Hammerlok Link provides full strength without bulk. 4:1 design factor.

Item #	Chain Size	Material Diameter	Inside Length	Link Opening	WLL	Approx. wt. ea.	Pack
667028-2	9/32"	.435"	1.98"	.541"	4,300 lbs	0.3 lbs.	36
667038-2	3/8"	.591"	3"	.91"	8,800 lbs	0.8 lbs.	36
667050-2	1/2"	.780"	3.8"	1.097"	15,000 lbs.	1.9 lbs.	12
667062-2	5/8"	.905"	4.54"	1.317"	22,600 lbs.	3.1 lbs.	12

Warning: Not to be used as repair links for body chain. Never exceed the Working Load Limit.



Draw Shaves

Item #	Description	Approx. wt. ea.	Pack
49962	5" Draw Shave	1.7 lbs	3
49941	8" Draw Shave	1.8 lbs	3
49931	10" Draw Shave	2.0 lbs	3
49951	13" Draw Shave	2.5 lbs	3

Warning: Always wear full eye & hand protection while using sharp tools.

A multi-purpose tool for the woodworking industry. Blade is cut from a solid bar of steel, precision ground & sharpened to a fine working edge.



In Shave

A precision tool for stripping logs and craft projects. Great tool for fence posts.

Item #	Description	Approx. wt. ea.	Pack
49961	5" In Shave	1.7 lbs	3

Warning: Always wear full eye & hand protection while using sharp tools.



Woodworking Center



24" x 28"

Award winning pegboard backer display

This popular display includes two each of three sizes of Draw Shaves and two In Shaves. The full color backer is free.

Item #	Description	Qty
49999	Complete pegboard backer display. Ships with :	
	Free color display backer	1
	8 inch Draw Shave (49941)	2
	10 inch Draw Shave (49931)	2
	13 inch Draw Shave (49951)	2
	5 inch In Shave (49961)	2

Warning: Always wear full eye and hand protection while using sharp tools.



Shingle Froe

For splitting out shingles or shakes and riving green wood.

Blade is made of 5160 Alloy Steel, handle is lacquered Hickory.

Item #	Description	Approx. wt. ea.	Blade	Handle
49991	Shingle Froe Assembly	3.0 lbs	16" x 2"	18"

Warning: Always wear full eye and hand protection while using sharp tools.

Harness Hardware

Our Fall Protection Equipment line of lightweight to heavy duty harness hardware satisfies most on-the-job needs. All are high quality, durable and reliable choices for fall arrest.



Item #	Description	Pack
92325	5/16" Weldless Oblong Link G4	100/box
91663	3/8" x 3" Small Ring	--
91667	3/8" x 3" Large Ring	--
91574	27/16" x 23/32" D Ring	50/box
91636	13/4" Harness D Ring	200/box
91598	21/8" Harness D Ring	100/box
91510c	27/16" Harness D Ring	100/box
91579	27/16" x 21/32" D Ring	50/box
91587	Buckle Assembly	200/box
91530A	Lanyard Hook	60/box
91569	Rebar Hook G4 - Large	12/box
91543	Ladder Hook G4	20/box
91509	5/8" Rope Grab Assembly	--



Pulp Hook

A versatile, general purpose material handling hand tool for use in wood and other materials.

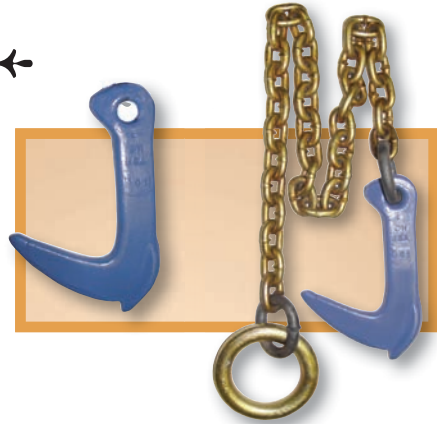
Item #	Description	Approx. wt. ea.	Pack
24358	11" Abbott Pulp Hook	1.3 lbs	6
24361	16" Bentley Pulp Hook	1.7 lbs	6



Log Grab & Assembly

Offered with or without chain.

Item #	Description	Dimensions	WLL	Approx. wt. ea.
44100	#1 Log Grab	----	NA	2.0 lbs.
44105	Log Grab Assembly	5/16" G7 x 36"	4,700 lbs.	6.3 lbs.



Wedges

Tree felling tools for any situation.



Aluminum Wedge

Plastic Wedges

Item #	Length	Width	Head	Approx. wt. ea.	Pack
Aluminum Wedges Non-sparking #713 aluminum alloy, safer than either steel or magnesium. Will not harm teeth of chain saw on accidental contact.					
49902	7"	3 1/2"	1 3/8 x 1 3/8	1.2 lbs	12

Warning: Always use eye protection when using wedges.

Item #	Length	Width	Head	Approx. wt. ea.	Pack
Plastic Chain Saw Wedges High density polyethylene plastic for maximum strength and resistance to "mushrooming" when driven with a hammer.					
49914	10 3/16"	3 3/32"	1 3/64	.6 lbs	12
49915	7 1/2"	2 3/4"	1 1/8	.4 lbs	12

Forged Rings

Tong Replacement Part

Weldless Rings, drop forged of high carbon steel to provide consistent grain flow. 5:1 design factor.

Item #	Material Dia.	Inside Dia.	For Use w/ Tong #	Weight per 100 pcs.	WLL	Pack
43709	1/2"	2 1/2"	40005	64 lbs	5,000 lbs.	12
43809	5/8"	2 3/4"	40225, 42315	99 lbs	7,000 lbs.	12
43009	3/4"	3"	42815	156 lbs	10,000 lbs.	12
43109	7/8"	3 1/4"	40455, 42805	250 lbs	14,500 lbs.	12
43209	1"	4"	40555, 42825	377 lbs	18,000 lbs.	12

Warning: Not to be used for overhead lifting.



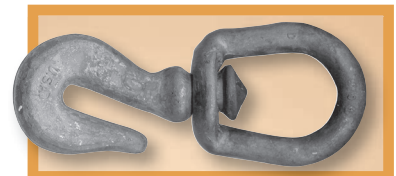
Swivel Hooks

Tong Replacement Part

Drop forged from carbon steel, this assembly is specially designed to be used with skidding tongs.

Item #	Material Dia.	Inside Dia.	For Use w/ Tong #	Weight per 100 pcs.	WLL	Pack
43794	1/2"	2 1/2"	40454	64 lbs	5,000 lbs.	12
43594	3/8"	2 3/4"	40004, 40224, 42314	99 lbs	7,000 lbs.	12

Warning: Not to be used for overhead lifting.



Terms of Sale

Contact Us

Order Placement or Product Questions

Our customer service center listed below can help you with order placement or questions about any products contained in this brochure.

Columbus McKinnon Corporation

140 John James Audubon Parkway
Amherst, New York 14228
800-888-0985 • 716-689-5400
Fax 716-689-5644

Copyright © 2012 Columbus McKinnon Corporation. No part of this publication may be reproduced, stored in a retrieval system, used in a spreadsheet, or transmitted in any form or by any means - electronic, mechanical, photocopying, recording, or otherwise - without the permission of Columbus McKinnon Corporation.

The following are registered trademarks of Columbus McKinnon Corporation: CM, Dixie Industries, EZ Pro



Minimum Shipment Requirements:

Orders will be accepted for \$100.00 or more shipped to a place of business.

Shipping Terms: F.O.B. shipping point with freight allowed on single shipment with a net weight of 500 lbs. or greater, to one destination within the continental United States. Carrier and routing will be at the discretion of Columbus McKinnon Corporation. Forgings and chain products may be combined to meet freight requirements.

Payment Terms:

1% 10 days/Net 30 days from date of invoice

Credit Card Purchases:

CM accepts both MasterCard and Visa for payment of invoices. Please discuss with your Customer Service Representative at the time of placing your order. Credit card purchases are at net invoice value and there are no discounts available.

Returned Goods Policy:

- Authorization to return any material to CM for credit must have prior approval from CM Customer Service. A Return Goods Number (RGN) must be obtained from Customer Service at 1-800-888-0985.

- The material must be returned to the destination specified by CM with the Return Goods Authorization visibly displayed on the outside of the carton, preferably on the shipping label. Unauthorized return of material will be refused and if returned without permission, the customer will be liable for delivery, storage and return freight charges.

- All customers will have the ability to implement an annual return without a restocking charge as long as that return meets the above mentioned time frame of one (1) year plus an offsetting order that represents or exceeds the dollar amount of like products being returned.

- All material must be returned to CM on a prepaid transportation charge basis. Collect shipments will be refused.

- All return goods accepted for credit are subject to a handling charge to cover the cost of inspection, testing & repackaging. Reconditioning costs, if necessary, will be charged.

- Engineered products specifically designed for unique applications and classified, as standard product cannot be returned for credit.

- The normal restocking charge for all returns is 20% of the value of the returned material plus reconditioning costs, if any. Restocking charges will not apply to the return of standard length of load chain for credit. All requests for authorization to return this material must be submitted within 60 days of shipment date except in the case of load chain.

- RGN authorizations are valid for 90 days. After 90 days, you must reapply for an RGN.

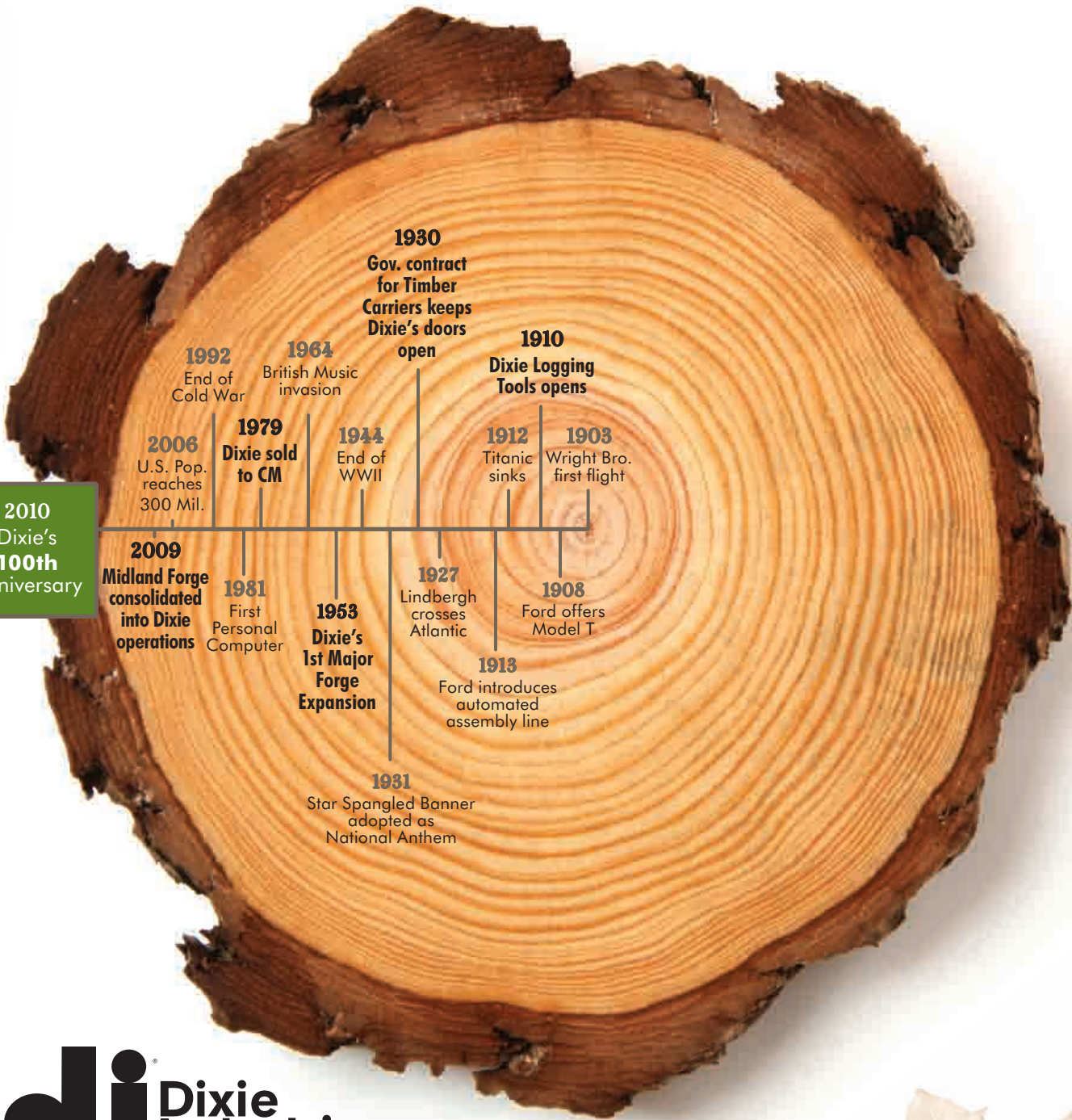
Discrepancies:

Please contact our Customer Service department within five (5) days or receipt of order to verify that a discrepancy has occurred. Claims for obvious freight company shortages should be filed directly with the carrier. Columbus McKinnon ships all orders F.O.B. shipping point. We will be glad to assist you to the extent of our ability.

Prices are subject to change without notice. Price in effect at time of shipment will apply.

Dixie Time Line

2010
Dixie's
100th
Anniversary



Phone (800) 888.0985 • Fax: (716) 689.5644 • www.cmworks.com